

# Locking Keyed Uni-Body LC Connectors

**Advanced Fiber Products Ltd. (AFP)** is a leading designer, developer and manufacturer of optical and optoelectronic products for telecom, industrial, military and medical markets. AFP offers a wide range of ancillary components in addition to specialized fiber assemblies for integration into complete packaging solutions. The company's facilities are located at Haverhill, near Cambridge in the United Kingdom and in Chicago, USA.

AFP's unique Secure LC connectors are designed to prevent unauthorized and inadvertent changes in highly sensitive applications such as Datacenters and Secure IT networks where multiple physical layer classifications may exist. (Secure LC Patent applied).

The compact Uni-Body LC design plugs to any industry compliant LC adaptor or active device port but cannot be disconnected without the use of a special extraction tool. Eight different key configurations are available as standard options. AFP's Secure LC connectors terminate with standard tooling.

The extraction tools allow for easy manual connector removal even from very high density patch panels and are color coded to match the connector key type. The connectors plug to both duplex and quad adaptors. An RFID tag embedded in the connector enabling smart connecting and asset monitoring is an optional feature.

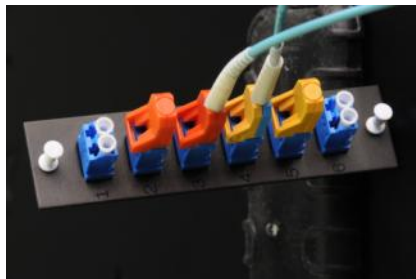
One additional product novelty is the custom dust cap requiring application upon connector removal from a port and hence promoting good 'fiber' discipline.

## Applications

- Military IT Networks
- Secure Federal IT Networks
- Commercial Data Centers
- Private Networks
- Industrial Process Control
- Fiber Sensor Applications
- Highest density patching where manual extraction is impossible

## Features

- Secure LC locks into ports once plugged – keyed extraction tool required for removal
- 8 key combinations with separate colors
- Plugs to standard LC Duplex & Quad adaptors and transceiver interfaces
- Compact Uni-body Duplex format
- The connector boot colors designate fiber type and application
- "Administrator key" option
- Dust cap "discipline" feature



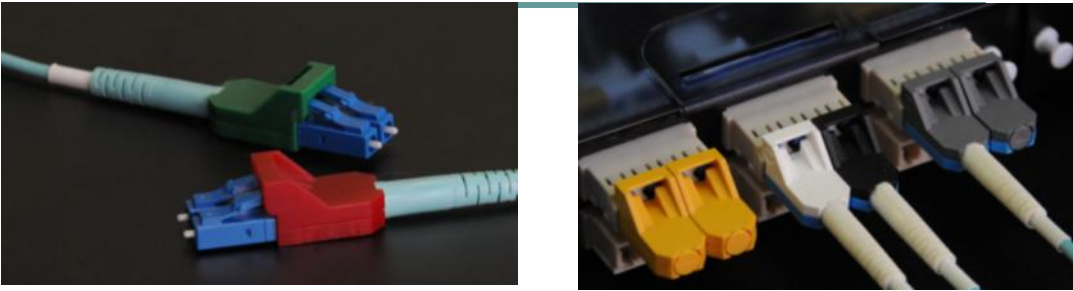
**Secure LC Patent Application No.0903326.7**

Advanced Fiber Products Ltd.  
Holland Centre  
Holland Road Industrial Estate  
Haverhill  
Suffolk  
England CB9 8PR

Phone: +44 (0) 1440-706441  
Phone: USA: +1 847 768 9001  
Fax UK: +44 (0) 1440-762044  
USA: +1 847 768 9002  
E-mail: sales@afpgco.com

**A**Advanced  
**F**Fiber  
**P**Products

# Locking Keyed Uni-Body LC Connectors



Connector Property	Singlemode	Multimode
Insertion Loss	0.10dB typical	0.20dB typical
Return Loss	≥ 55dB typical for UPC	-
Durability	< 0.2dB change 500 cycles	< 0.2dB change 500 cycles
Operating Temperature	-40°C to +70°C	-40°C to +70°C
Ferrule Criteria	125.5µm +1/-0 Concentricity: ≤ 1µm	127µm nominal
Part Number	CON10119-XX-0YS	CON30119-XX-0YM



Key/Housing Color	Connector dash No. XX	Extraction Tool No.	Locking Port Plug
Black	-12-	T0010121-12	PLG10271-12
Red	-13-	T0010121-13	PLG10271-13
Green	-14-	T0010121-14	PLG10271-14
Blue	-15-	T0010121-15	PLG10271-15
Grey	-16-	T0010121-16	PLG10271-16
White	-17-	T0010121-17	PLG10271-17
Orange	-18-	T0010121-18	PLG10271-18
Yellow	-19-	T0010121-19	PLG10271-19
Purple	Administrator Tool	T0010121- 11	-



Advanced Fiber Products  
Holland Centre  
Holland Road Industrial Estate  
Haverhill  
Suffolk  
England CB9 8PR

Phone: +44 (0) 1440-706441  
Phone: USA: +1 847 768 9001  
Fax UK: +44 (0) 1440-762044  
USA: +1 847 768 9002  
E-mail: sales@afpgco.com

Y in connector part code designates boot color. Black = 2, White = 7, Beige = 8, Aqua = 4, Blue = 5

Replacement Connector Dust Cap - Part number CAP10122-01

RoHS Directive Compliant .Conforms to GR-326. Flammability: UL 94 V-0 Grade

[www.afpgco.com](http://www.afpgco.com)

